

Final Program

Wednesday, Aug. 16

11:30-	Registration
13:30-14:00	Opening session
14:00-16:00	Keynote lectures
16:30-18:30	Parallel sessions 1
18:30-	Reception
19:30-	Bon fires

Thursday, Aug. 17

9:20-11:00	Workshops 1
11:30-13:00	Workshops 1
14:00-16:00	Workshops 1
16:30-18:30	Parallel sessions 2
19:00-	Food, drinks and music in Nishijin

Friday, Aug. 18

9:20-11:20	Parallel sessions 3
11:40-13:20	Parallel sessions 4
14:00-	Optional tours

Saturday, Aug. 19

9:50-11:20	Workshops 2
11:50-13:20	Workshops 2
14:20-16:30	Workshops 2
17:00-18:30	Eric Pas Prize session
19:00-	Conference dinner

Sunday, Aug. 20

9:30-11:30	Workshop reports
11:30-12:00	Closing session
12:15-14:00	Workshop chairs, session chairs and board members meeting
14:00-15:30	IATBR Board meeting



IATBR

Wednesday, Aug. 16

11:30-18:00 Registration

13:30-14:00 Opening session

Centennial Hall

Chair **Ryuichi Kitamura**, Kyoto University

Opening Remarks by IATBR President (Professor **Chandra Bhat**)

Opening Remarks by Supporting Organization (Professor **Yasunori Iida**, ISSR)

14:00-16:00 Keynote lectures

Centennial Hall

John Urry, University of Lancaster

The sociabilities of travel

Masahisa Fujita, Kyoto University

Knowledge interactions and travel behavior

16:00-16:30 Coffee break

16:30-18:30 Sessions 1

Session 1.1 Public transport

International Conference Hall

Chair **Elaine Murakami**, Federal Highway Administration

Proximity is a state of mind: Exploring mental maps in daily activity travel behaviour

Hannes Els, Janssens Davy, Wets Geert

Personal values, urban form and auto availability in the analysis of walking and transit

Matthew A. Coogan, **Karla H. Karash**, Thomas Adler

Role of minority influence on the diffusion of compliance with a demand management measure

Yos Sunitiyoso, Erel Avineri, Kiron Chatterjee

The influence of accessibility by mode and worker on residence location choices in multiple-worker households

Brian Ho-Yin Lee, Paul Waddell, Liming Wang

Discrete choice modeling of combined mode and departure time

Shamas ul Islam Bajwa, Shlomo Bekhor, Masao Kuwahara, Edward Chung

Session 1.2 Built environment and activity

International Conference Hall

Chair **Martin E.H. Lee-Gosselin**, Université Laval

Income growth and urban sprawl : A hierarchical Bayes approach on the largest French metropolitan areas

Georges Bresson, **Jean-Loup Madre**, Alain Pirotte

Travel characteristics of residents in three sprawl areas of Hong Kong: What lessons can we learn?

Becky P.Y. Loo, **Alice S.Y. Chow**

Identifying and assessing the influence of real estate investors' self-conceptions and beliefs for sustainable urban development and form

Robert Bügl, Peter Loukopoulos, Roland W. Scholz

Urban structure and trip length considering journey-to-work travel behaviour

Yuzo Masuya, Tohru Tamura, Kazuo Saito, John Black

Latent lifestyle preferences and household location decisions

Joan L. Walker, Jieping Li

Session 1.3 Tracking data collection and analysis

International Conference Hall

Chair **Hani Mahmassani**, The University of Maryland

Spectrum analysis of travel behavior

Takeshi Nagae, Ryuta Ohnishi, So Matsuda, Yasuo Asakura

Mobile positioning data in travel behaviour studies: SPM experiments in Estonia

Rein Ahas, Anto Aasa, Ülar Mark

Development of behavioral context addressable loggers in the shell for travel-activity analysis

Eiji Hato



IATBR

Session 1.4 Applications

Room No. 6

Chair **Eric J. Miller**, University of Toronto

Implementation issues of route choice models in path-based algorithms

Shlomo Bekhor, Tomer Toledo, Joseph N. Prashker

Using the logsum in project appraisal

Gerard de Jong, Andrew Daly, Eric Kroes, Toon van der Hoon

The gap between theory and application when modelling transport – the necessity of quality standards

Gerd Sammer

The influence of personal and activity attributes on activity location choice: in-home or out-of-home?

Kelly J. Clifton, Gulsah Akar, Sean T. Doherty

Session 1.5 Theory and estimation of behavioural models

Room No. 8

Chair **Moshe E. Ben-Akiva**, Massachusetts Institute of Technology

A systematic comparison of continuous and discrete mixture models

Stephane Hess, Michel Bierlaire, John W. Polak

Approximations of choice probabilities in generalized random utility models

N. Kalouptsidis, V. Psaraki

A method to infer theoretically consistent demand elasticities from mode choice models

Brett Smith

Examining the impacts of residential self-selection on travel behavior: Methodologies and empirical findings

Xinyu Cao, **Patricia L. Mokhtarian**, Susan L. Handy

Modeling latent choices: Application to driving behavior

Moshe E. Ben-Akiva, Charisma Choudhury, Tomer Toledo

Session 1.6 Trip making and activity analysis

Room No. 9

Chair **Dirk Zumkeller**, University of Karlsruhe

Spatial representation and destination choice: What are the consequences of modifying reality?

Darren M. Scott

From activity-based modeling to social event-based modeling: Conceptual framework and empirical results

Theo Arentze, Aloys Borgers, Maarten Ponjé, **Harry Timmermans**

Activity based trip generation and distribution and attribute based modal split - A case study of the new west rail in Hong Kong

Hing-Po Lo, Mei-Yee Li

A mixed ordered probit analysis of elderly trip generation in the Hamilton CMA

Antonio Páez, **Darren M. Scott**, Dimitris Potoglou, Pavlos Kanaroglou, K. Bruce Newbold

Trip sequences for older people: An analysis of LATS 2001 data

Fengming Su, **Michael G. H. Bell**

Session 1.7 Behavioural modification

Room No. 10

Chair **Tommy Gärling**, Göteborg University

Why don't we change our mobility behaviours? Acceptance and hindrance to a change: The case study of the Greater Paris Region as compared to Nagoya

Anaïs Rocci

Travel behaviour considerations during the process of residential relocation

Karen Stanbridge, Glenn Lyons

What it takes for people to change? A time question

Cynthia Chen, Xiaoqiang Chen

Variability in traffic streams: A gateway to successful travel demand management?

Romano Del Mistro, **Roger Behrens**

Session 1.8 Advanced choice models

Room No. 11

Chair **Tetsuo Yai**, Tokyo Institute of Technology

The choice of a mode of transportation for home to work trips in the French Parisian region: Application of mixed GEV models with non linear utility functions

Matthieu de Lapparent

Nonparametric specification of the deterministic component of utility function in a travel mode choice model

Daisuke Fukuda, Tetsuo Yai

The impact of accommodating nonlinear response to level of service variables on unobserved heterogeneity: A case study in the context of travel mode choice models

Abdul Rawoof Pinjari, **Chandra Bhat**

Treatment of seasonal tickets for public transport in estimation and application of mode/destination choice models

Odd I. Larsen, Jens Rekdal

A comprehensive analysis of household vehicle make/model/vintage and usage decisions

Sudeshna Sen, **Chandra R. Bhat**

18:30- Reception and Bon fires

Restraunt Camphora



IATBR

Thursday, Aug. 17

9:10-18:00 Registration

9:20-11:00 Workshops 1

11:00-11:30 Coffee break

11:30-13:00 Workshops 1

13:00-14:00 Lunch

14:00-16:00 Workshops 1

WS 1.1 Behavior under uncertainty

International Conference Hall

Chair **André de Palma**, University of Cergy-Pontoise

Resource paper **John W. Polak**, Imperial College London

Modelling risky choice behaviour: Evaluating alternatives to expected utility theory

Alexis Michea, **John Polak**

Learning and risk attitudes in route choice dynamics

Roger B. Chen, Hani S. Mahmassani

WS 1.2 Social networks and telecommunications

International Conference Hall

Chair **Patricia L. Mokhtarian**, University of California, Davis

Resource paper **Martin Dijst**, Utrecht University

Synthesis report **Nobuaki Ohmori**, The University of Tokyo

A closer look at the interrelations among information and communication technologies, travel and space-time constraints

Tim Schwanen, **Mei-Po Kwan**

Review: The state of tele-activities

Pavel Andreev, Ilan Salomon, Nava Pliskin

Spatial and social networks: The case of travel for social activities

Juan Antonio Carrasco, Eric J. Miller, Barry Wellman

WS 1.3 Behavioral modification

International Conference Hall

Chair **Peter Jones**, UCL

Resource paper **Tommy Gärling**, Göteborg University and **Satoshi Fujii**, Tokyo Institute of Technology

Key events and their effect on mobility biographies. The case of child birth

Martin Lanzendorf

Shocking habits: Methodological issues in analysing changing personal travel behaviour over time

Roger Behrens, Romano Del Mistro

WS 1.4 Advances in data acquisition

Room No. 6

Chair **Juan de Dios Ortuzar**, Universidad Católica de Chile

Resource paper **Yasuo Asakura**, Kobe University and **Eiji Hato**, The University of Tokyo

GPS component for the next French national transport survey (ent 2007): preparation, acceptability, results of the pilot tests

Philippe Marchal, Jimmy Armoogum, Cyril Bouvier, Pierre-Olivier Flavigny, Jean-Paul Hubert

WS 1.5 New frontiers of discrete choice analysis

Room No. 8

Chair **Takayuki Morikawa**, Nagoya University

Resource paper **David A. Hensher**, **John Rose** and **Sean Puckett**, The University of Sydney

On the use of mixed RP/SP models in prediction: Accounting for random taste heterogeneity

Elisabetta Cherchi, Juan de Dios Ortúzar

Discrete choice model estimation with missing information on perceived characteristics

Quentin K. Wan, Hong K. Lo

Designing stated choice experiments: State-of-the-Art

Michiel C.J. Bliemer, John M. Rose

WS 1.6 Advances in activity analysis

Room No. 11

Chair **Kay W. Axhausen**, Swiss Federal Institute of Technology Zurich

Resource paper **Ram Pendyala**, Arizona State University

Synthesis report **Kuniaki Sasaki** and **Kazuo Nishii**, University of Yamanashi

Modelling activity generation: A utility based model for activity-agenda formation

Khandker M. Nurul Habib, Eric J. Miller

A practical policy sensitive activity-based model

Yoram Shiftan, Moshe Ben-Akiva

The evolution of perceived spatio-temporal flexibility in activity patterns

Martin E.H. Lee-Gosselin, Pierre Rondier, Luis Miranda-Moreno



IATBR

16:00-16:30 Coffee break

16:30-18:30 Sessions 2

Session 2.1 Long term dynamics

International Conference Hall

Chair **Jean-Loup Madre**, National Institute of Research on Transports and Safety

The importance of life course events for daily travel behaviour - A panel analysis

Jan Prillwitz, Martin Lanzendorf

Modeling the influence of structural lifecycle events on activity-travel decisions using a structure learning algorithm

Marloes Verhoeven, Theo Arentze, Harry Timmermans, Peter van der Waerden

An investigation of car ownership in Europe based on the European Community Household Panel

Joyce Dargay, Laurent Hivert, **Diègo Legros**

Long and short term dynamics in activity scheduling: A structural equations approach

Matthew J. Roorda, Tomás Ruiz

Travel time expenditures over time: Exploring dynamics in travel time budgets

Ram M. Pendyala, Amlan Banerjee, Xin Ye

Session 2.2 Accessibility measurement

International Conference Hall

Chair **Hideyuki Kita**, Tottori University

Towards a multi-activity multi-person accessibility measure: Concept and first tests

Joyce K. L. Soo, Dick Ettema, Henk F.L. Ottens

The evolution of accessibility over time

Cynthia Chen, Wei Li

Accessibility for bus transportation planning in rural areas

Keishi Tanimoto, Hideyuki Kita

Job-matching and journeys-to-work in Sweden - A top-down perspective?

Kerstin Westin, Erika Sandow

Session 2.3 Analysis with survey results

International Conference Hall

Chair **Lidia P. Kostyniuk**, University of Michigan

Optimal survey duration of a travel survey

Metin Senbil, Ryuichi Kitamura

Behavioural responses to a new transport option- A dynamic analysis using a six-month panel survey

Kiron Chatterjee, Kang-Rae Ma

A model of generating out-of-home discretionary activity participation and travel for household members in a week

Shoji Matsumoto, Kenji Kato

Long-term mobility decisions during the life course: Experiences with a retrospective survey

Sigrun Beige, Kay W. Axhausen

Session 2.4 Simulating behaviour

Room No. 6

Chair **Noboru Harata**, The University of Tokyo

Implementing activity-based models: Accelerating the replanning process of agents using an evolution strategy

David Charypar, Kay W. Axhausen, Kai Nagel

Population synthesis for microsimulating travel behavior

Jessica Y. Guo, **Chandra R. Bhat**

Internet GIS-based activity-travel simulator for investigating alternative activity-travel patterns

Morimichi Nakazato, **Nobuaki Ohmori**, Sadayasu Aono, Takuya Maruyama, Noboru Harata

Fitting S-shaped activity utility functions based on stated-preference data

Kelly van Bladel, Tom Bellemans, Geert Wets, Theo Arentze, Harry Timmermans

Simulation modeling for advanced urban taxi service systems

Hyunmyung Kim, **Jun-Seok Oh**, R. Jayakrishnan

Session 2.5 Influence of travel time variability

Room No. 8

Chair **Joseph N. Prashker**, Technion – Israel Institute of Technology

Congestion, risk aversion and the value of information

André de Palma, Robin Lindsey, Nathalie Picard

A moment of time: Reliability in route choice using stated preference?

David M. Levinson, Nebiyou Y. Tilahun

Travel information use and effects

Caspar G. Chorus, Joan L. Walker, Moshe E. Ben-Akiva

Exploring user behavior in online network equilibrium problems

Satish V. Ukkusuri, Gopal R. Patil

Session 2.6 Mobility and travel behaviour in developing countries

Room No. 9

Chair **Piotr Olszewski**, Nanyang Technological University

Inter-regional and inter-temporal analysis of travel behaviour for Asian metropolitan cities of Bangkok, Kuala Lumpur, Manila and Nagoya

Dilum Dissanayake, Shinya Kurauchi, Takayuki Morikawa, Satoko Ohashi



IATBR

Modeling the behavior of waiting colony on the road side using adaptive neural fuzzy inference system

Afshin Shariat Mohaymany, Mahmoud Mesbah

Analysis of mode choice dynamics: A comparison of utility maximization and disutility minimization models

Karthik K. Srinivasan, P. V. L. Bhargavi

An activity-based microsimulation model of travel demand in the Jakarta metropolitan area

Sadayuki Yagi, **Abolfazl Mohammadian**

Session 2.7 Learning and modification

Room No. 10

Chair **Theo Arentze**, Eindhoven University of Technology

Location choice vis-à-vis transportation: The case of recent homebuyers and apartment dwellers

Michelle Bina, Kara M. Kockelman

Does the release from household responsibilities lead to more out-of-home activities? The case of hiring live-in maids in Hong Kong

Donggen Wang

Allocating time and location information to activity-travel patterns through reinforcement learning

Janssens Davy, Lan Yu, Wets Geert, Chen Guoqing

Multiagent learning models for route choice in transportation networks: An integrated approach of regret based strategy and reinforcement learning

Toshihiko Miyagi

Investigation and analysis of evidence of asymmetric churn in travel demand models

Wafaa Saleh, Sèona Farrell

Session 2.8 Mode choice behaviour

Room No. 11

Chair **David Brownstone**, University of California, Irvine

Modeling the effects of safety margin on air passenger behavior for ground access mode choice problems

Mei Ling Tam, **William H.K. Lam**, Hing Po Lo

Quality of information and knowledge about mode attributes in mode choice

Gerd Sammer, Christian Gruber, Gerald Röschel

A rule-based approach to multi-modal choice set generation

Sascha Hoogendoorn-Lanser, Rob van Nes, Piet Bovy

Mode choice analysis with imprecise location information

Toshiyuki Yamamoto, Ryosuke Komori

A structural equation analysis of revealed and stated travel mode and activity choices

Ryoichi Sakano, **Julian M. Benjamin**

19:00- Food, drinks and music in Nishijin



IATBR

Friday, Aug. 18

9:10-13:30 Registration

9:20-11:20 Sessions 3

Session 3.1 Route choice modelling

International Conference Hall

Chair **William H.K. Lam**, The Hong Kong Polytechnic University

Effects of choice set composition in route choice modeling

Shlomo Bekhor, Carlo G. Prato

Capturing correlation with subnetworks in route choice models

E. Frejinger, M. Bierlaire

On the use of choice sets for estimation and prediction in route choice

Rob van Nes, **Sascha Hoogendoorn-Lanser**, Frank Koppelman

Description of route choice behaviour conforming to elimination-by-aspects by extracting choice strategy with words

Kazutaka Takao, Yasuo Asakura

Stochastic route choice set generation: Behavioural and probabilistic foundations

Piet H.L. Bovy, Stella Fiorenzo-Catalano

Session 3.2 ICT and activity

International Conference Hall

Chair **Konstadinos G. Goulias**, University of California, Santa Barbara

Exploring ICT impacts on leisure activities and leisure-related travel

Pavel Andreev, Nava Pliskin, Ilan Salomon

The Impacts of internet use upon activity participation and travel: Results from a longitudinal panel-based study

Susan Kenyon

Measurement of latent mobility considering flow of information using telecommunication and activity-travel survey

Kuniaki Sasaki, Kazuo Nishii

Tour activity scheduling system under ubiquitous environment: System development and performance evaluation

Hyunmyung Kim, **Jun-Seok Oh**

Impact of e-shopping on shopping related travel: An econometric application

Italo Meloni, **Erika Spissu**, Massimiliano Bez

Session 3.3 Longitudinal survey

International Conference Hall

Chair **Johanna Zmud**, NuStats

Adulterous behaviour within the car-owner couple: Some analyses from French panel data on car rental and car sharing within households

Francis Papon, Laurent Hivert

Cross section versus continuous mobility surveys: International experiences

Jean-Loup Madre, Juan de Dios Ortúzar, Jimmy Armoogum

Reactions on individualised information - Survey and modelling

Stefan Geweke, Bastian Chlond, Dirk Zumkeller

Time-space analysis of Hanshin Expressway users based on probe-person trip survey

Hitoshi Yatsumoto, Toshihiko Kitazawa, **Shinji Nakagawa**, Atsuki Okamoto, Yasuo Asakura

Modeling the dynamics of urban travel system: Two models and their coupling

Charles Raux

Session 3.4 Simulation approach

Room No. 6

Chair **Takamasa Akiyama**, Gifu University

Longitudinal simulation of travel under budget constraints

Tobias Kuhnimhof, Christoph Gringmuth, **Dirk Zumkeller**

Interaction in activity location scheduling

V. Tabak, B. de Vries, J. Dijkstra, A. J. Jessurun

A tour-based model for the simulation of a distributive freight system

Francesco Russo, Armando Carteni

Development of integrated travel behaviour model with spatial information

Takamasa Akiyama, Masashi Okushima, Noriyuki Izumi

Planomat: A comprehensive scheduler for a large-scale multi-agent transportation simulation

Konrad Meister, Michael Balmer, Kay W. Axhausen, Kai Nagel

Session 3.5 Road pricing policy

Room No. 8

Chair **Kara Kockelman**, The University of Texas at Austin

Dynamic optimal toll design problem – Travel behavior analysis including departure time choice and heterogeneous users

Dusica Joksimovic, Michiel C. J. Bliemer, Piet H. L. Bovy

Measuring, understanding and predicting behavioural responses to road pricing

Aoife O'Grady, Anya Millington, Jo Bacon, Helen Bullock

Determinants of public acceptability and car-use change goal: The Stockholm road pricing field trial

Peter Loukopoulos, Cecilia Jakobsson, Tommy Gärling, Satoshi Fujii



IATBR

Valuation of travel time and departure time choice in the presence of time-of-day pricing: A theoretical approach

Kaan Ozbay, Ozlem Yanmaz-Tuzel, Jose Holguin-Veras

The impacts of allowing hybrid vehicles and solo toll-paying vehicles in existing high-occupancy vehicle lanes

David Brownstone, Will Recker, Christopher Breiland

Session 3.6 Household travel-activity behaviour

Room No. 9

Chair **Akimasa Fujiwara**, Hiroshima University

The household multi-day activity scheduling problem: A conceptual framework and first principles

Theo Arentze, Harry Timmermans

A joint model of vehicle transactions, activity scheduling and mode choice

Matthew J. Roorda, Juan A. Carrasco, Eric J. Miller

Household travel behaviour in developing countries: A combined RP/SP NL model of vehicle ownership, mode choice and trip sharing

D. Dissanayake, T. Morikawa

A household activity scheduling model incorporating a task allocation process with week-based learning mechanisms

Hee-Kyung Kim, Hyunmyung Kim, Michael G. McNally

Bayesian analysis of group choice behaviour in the context of household car ownership

Junyi Zhang, Backjin Lee, **Masashi Kuwano**, Akimasa Fujiwara

Session 3.7 Mobility management

Room No. 10

Chair **Ram Pendyala**, Arizona State University

Can state regulation of car use activate moral obligation to use sustainable modes of transport?

Satoshi Fujii

Using rewards as a traffic management tool: Behavioural effects of reward strategies

Dick Ettema, Erik Verhoef

An analysis of effects on workplace mobility management targeting commuter transport

Ayako Taniguchi, Satoshi Fujii

Exploring key factors affecting individual responses to congestion policies

Sangho Choo, **Patricia L. Mokhtarian**

Session 3.8 Psychological aspects

Room No. 11

Chair **Nobuhiro Uno**, Kyoto University

Learning in day-to-day route choice

Enide A. I. Bogers, Henk. J. van Zuylen, Serge. P. Hoogendoorn, Karel A. Brookhuis

Schedule-based dynamic assignment models for air transport networks

Umberto Crisalli, Fiorella Sciangula

Incorporating attitudes and perceptions in airline itinerary choice models

Georg Theis, **Joan L. Walker**

11:20-11:40 Coffee break

11:40-13:20 Sessions 4

Session 4.1 Pedestrian

International Conference Hall

Chair **Harry Timmermans**, Eindhoven University of Technology

A detailed analysis of the influence of an urban trail system on travel behavior

Kevin J. Krizek, Kristin Thompson, Ahmed El-Geneidy

Choice models using matching data

Nobuhiro Sanko, Takayuki Morikawa

The relationship between neighborhood environment and walking behavior: the mediating influence of perceptions

Andréa D. Livi Smith, **Kelly J. Clifton**

'WALC': Measuring pedestrian access to local bus and rail stations, taking into account traveller perceptions

Peter Jones, Helena Titheridge, Sarah Wixey, Georgina Christodoulou

Session 4.2 ICT and behaviour

International Conference Hall

Chair **Mei-Po Kwan**, The Ohio State University

An experimental analysis of effects of information about short-term trend of traffic condition upon route choice behavior

Yoongho Ahn, Nobuhiro Uno, Fumitaka Kurauchi, Kohei Mikami

Dynamic strategy choice behavior under competitive environment: Application to electronic freight auction marketplaces

Yeonjoo Min, Hani S. Mahmassani



IATBR

Introducing consideration of varied-spatiotemporal workers to the study of teleworking

Glenn Lyons, Hebba Haddad, Tim Jones

Session 4.3 Survey methods

International Conference Hall

Chair **John W. Polak**, Imperial College London

Controlling for sample selection in the estimation of the value of travel time

Stefan L. Mabit, Mogens Fosgerau

Designing efficient data for stated choice experiments: Accounting for socio-demographic and contextual effects in designing stated choice experiments

John M. Rose, Michiel C.J. Bliemer

Responsive design approach in household travel surveys: Michigan experience

Laurie Wargelin, James Leiman, Lidia P. Kostyniuk

Session 4.4 Safety and security issues

Room No. 6

Chair **Robert B. Noland**, Imperial College London

Behavioural and analytical considerations in transport safety policy

Robert B. Noland

A general risk model in transportation system for disaster prevention

Francesco Russo, **Antonino Vitetta**

Toward a model of risky driving using objective measures of driving behavior

Lidia P. Kostyniuk, David W. Eby

An assessment of activity-based modeling and simulation for applications in operational studies, disaster preparedness, and homeland security

Kriste M. Henson, Konstadinos G. Goulias, Reginald G. Golledge

Session 4.5 Pricing

Room No. 8

Chair **Shoshi Mizokami**, Kumamoto University

The acceptance tendency of different road pricing scenarios and their effects on auto/motorbike commuters' behavior in Taiwan

Rong-Chang Jou, Soi-Hoi Lam, Ping-Hwa Wu

Validating willingness to pay estimates for toll facilities through panel survey methods

Mark Bradley, Johanna Zmud

The influence of trip length on marginal time and money values

Andrew Daly, Juan Carrasco

Session 4.6 Activity based models and policy analysis

Room No. 9

Chair **Dick Ettema**, Utrecht University

Modelling complex activity-travel scheduling decisions: Procedure for the simultaneous estimation of activity generation and duration functions

Linda Nijland, **Theo Arentze**, Aloys Borgers, Harry Timmermans

Incorporating car-type preferences and intra-household car allocation into travel demand models

Eric Petersen, Peter Vovsha

Joint modelling of time assignment and mode choice for the Chilean TASTI sample

Marcela A. Munizaga, Sergio Jara-Díaz, Paulina Greeven

A generalized multi-state hidden Markov extension model for multi-state activity episode durations

Backjin Lee, Harry Timmermans, Junyi Zhang, Akimasa Fujiwara

Session 4.7 Transport policy analysis

Room No. 10

Chair **Kazuo Nishii**, University of Yamanashi

An examination of the simultaneous relationship between transportation expenditures and household incomes

Piyushimita Thakuriah

Determinants of car mileage - Changes of car use and travel behaviour in Germany

Dominika Kalinowska, Hartmut Kuhfeld

Study on hybrid planning system for new transit construction project in suburban area including behavior simulation from psychology viewpoint

Mamoru Haruna, **Xuepeng Qian**

Different policy objectives of the road authority in the optimal toll design problem

Dusica Joksimovic, Michiel C. J. Bliemer, Piet H. L. Bovy

Session 4.8 Social networks and travel behaviour

Room No. 11

Chair **Elisabetta Cherchi**, University of Cagliari

Networks, biographies and travel: First empirical and methodological results

K.W. Axhausen, A. Frei, T. Ohnmacht, J. Larsen, J. Urry

Selfishness and altruism in the distribution of travel time and income

Nebiyou Y. Tilahun, David M. Levinson

Social networks and travel behavior: Report from an integrated travel diary

Julia Silvis, Deb Niemeier, Raissa D'Souza

14:00- Optional Tours



IATBR

Saturday, Aug. 19

9:10-18:00 Registration

9:50-11:20 Workshops 2

11:20-11:50 Coffee break

11:50-13:20 Workshops 2

13:20-14:20 Lunch

14:20-16:30 Workshops 2

WS 2.1 Experimental approaches

International Conference Hall

Chair **Ryuichi Kitamura**, Kyoto University

Resource paper **Hani S. Mahmassani**, The University of Maryland

Modelling interdependent behaviour as a sequentially-administered stated choice experiment:

Analysis of freight distribution chains

Sean M. Puckett, **David A. Hensher**

The effectiveness of social experiments on verification of pre-estimated route choice model

Yalcin Alver, Shoshi Mizokami

An adaptive-agent simulation analysis of dynamic network behavior

Shoichiro Nakayama, Jun-ichi Takayama

WS 2.2 Group behavior

International Conference Hall

Chair **Andrew Daly**, RAND Europe

Resource paper **Harry Timmermans**, Eindhoven University of Technology

Synthesis report **Akimasa Fujiwara** and **Junyi Zhang**, Hiroshima University

An agent model of social network and travel behavior interdependence

Jeremy Hackney, **Kay W. Axhausen**

Measuring and simulating altruistic behaviour in group travel choice decisions

Erel Avineri

Multi-dimensional timing decision model of household activity-travel behavior with endogenous coupling constraints

Junyi Zhang, Akimasa Fujiwara, Harry Timmermans, Backjin Lee, Theo Arentze

WS 2.3 Integrated models

International Conference Hall

Chair **Joan L. Walker**, Boston University

Resource paper **Eric J. Miller**, University of Toronto

A multi-agent model of urban processes: Modelling relocation processes and price setting in housing markets

Dick Ettema

Stress triggered household decision to change dwelling: A comprehensive and dynamic approach

Khandker M. Nurul Habib, Ilan Elgar, Eric J. Miller

Modeling the interdependence in household residence and workplace choices

Paul Waddell, Chandra Bhat, Naveen Eluru, Liming Wang, Ram Pendyala

WS 2.4 Application to policy analysis and planning

Room No. 6

Chair **Yoram Shiftan**, Technion – Israel Institute of Technology

Resource paper **Konstadinos G. Goulias**, University of California Santa Barbara

The option value of public transport services. A missing benefit category in transport policy appraisal? Methodology and case studies for the Netherlands.

Karst Geurs, Rinus Haaijer, Bert van Wee

The equity effects of roadway tolls: An application of Hicksian welfare measures with income effects

Joel P. Franklin

Using Singapore ERP transaction data to model trip timing decisions

Piotr Olszewski, Litian Xie



IATBR

WS 2.5 Advances in econometric methods

Room No. 11

Chair **Chandra R. Bhat**, The University of Texas at Austin.

Resource paper **Toshiyuki Yamamoto**, Nagoya University, **Tetsuro Hyodo**, Tokyo University of Marine Science and Technology and **Yasunori Muromachi**, Tokyo Institute of Technology

Testing the choice of a mixing distribution in discrete choice models

M. Fosgerau, M. Bierlaire

Random covariance heterogeneity in discrete choice models

Stephane Hess, Denis Bolduc, John W. Polak

The multiple discrete-continuous extreme value (MDCEV) model: Role of utility function parameters, identification considerations, and model extensions

Chandra R. Bhat

Discrete choice theory with constrained demand

André de Palma, **Nathalie Picard**, Paul Waddell

16:30-17:00 Coffee break

17:00-18:30 Eric Pas Prize session

Centennial Hall

Chair **Gerd Sammer**, University of Natural Resources and Applied Life Sciences

Chang-Hyeon Joh, Kyung-Hee University (Winner, 2004)

Measuring and predicting adaptation in multidimensional activity-travel patterns

Sarah Bush, Southern Utah University (Honorable mention, 2003)

Forecasting 65+ travel: An integration of cohort analysis and travel demand modeling

2005 Awardees: To be announced

19:00-

Conference dinner

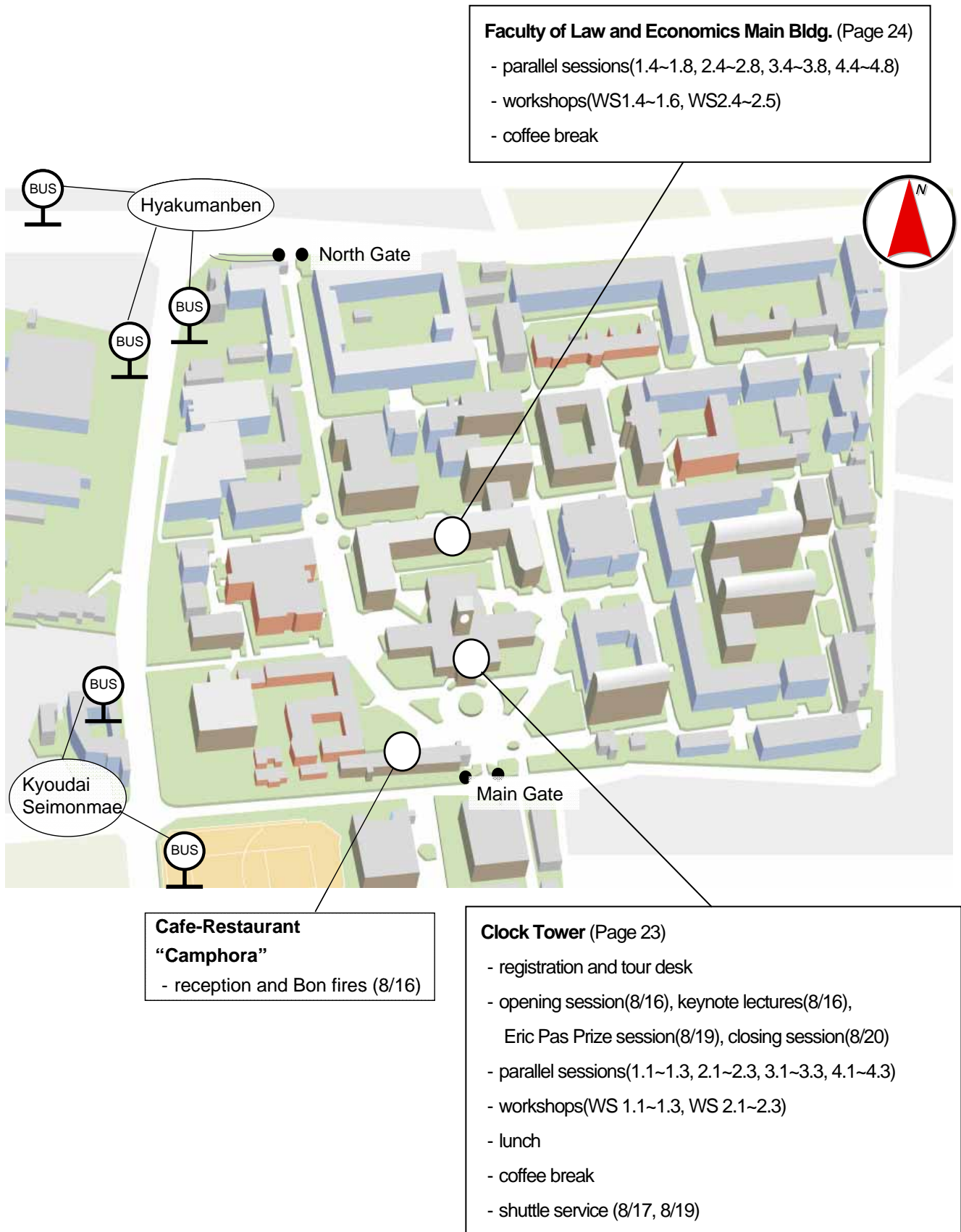
Sponsored by the Kometani-Sasaki Fund

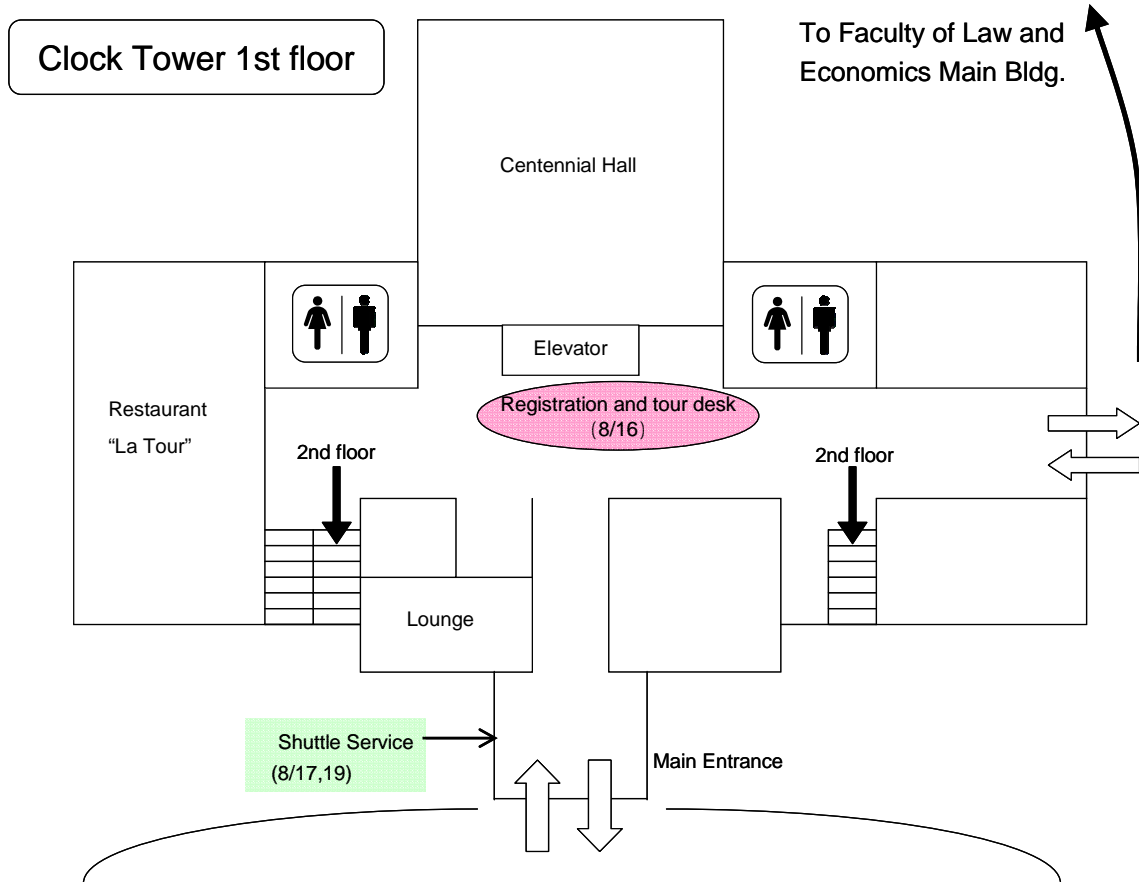
Sunday, Aug. 20

- 9:30-11:30** Workshop reports *Centennial Hall*
Chair **Ryuichi Kitamura**, Kyoto University
- 11:30-12:00** Closing session *Centennial Hall*
Chair **David A. Hensher**, The University of Sydney
- 12:15-14:00** Workshop chairs, session chairs and board members meeting *Conference room*
- 14:00-15:30** IATBR Board meeting *Conference room*

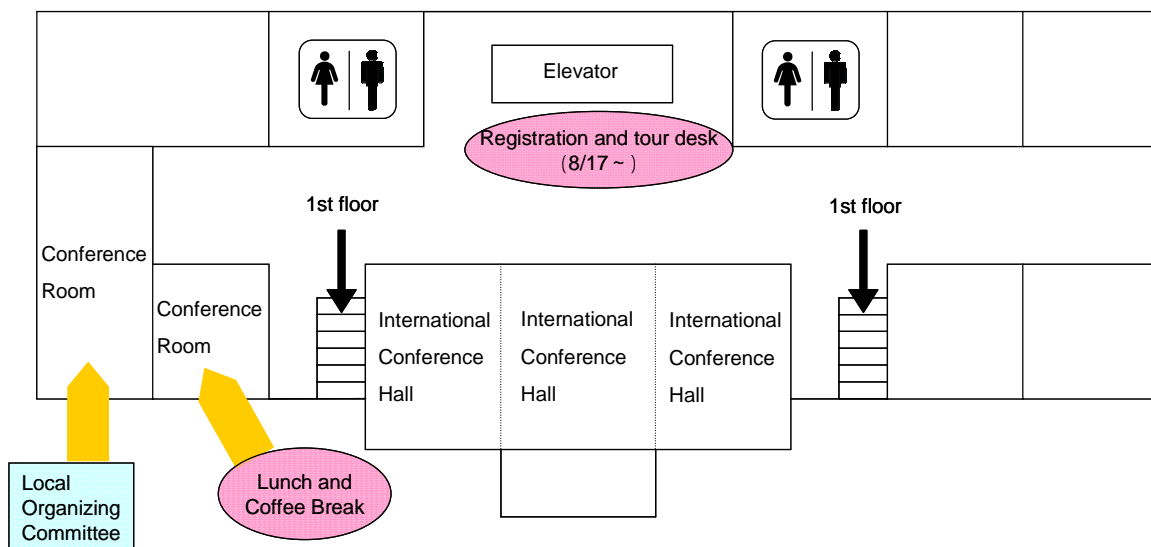


Venue Map (Kyoto University)





Clock Tower 2nd floor

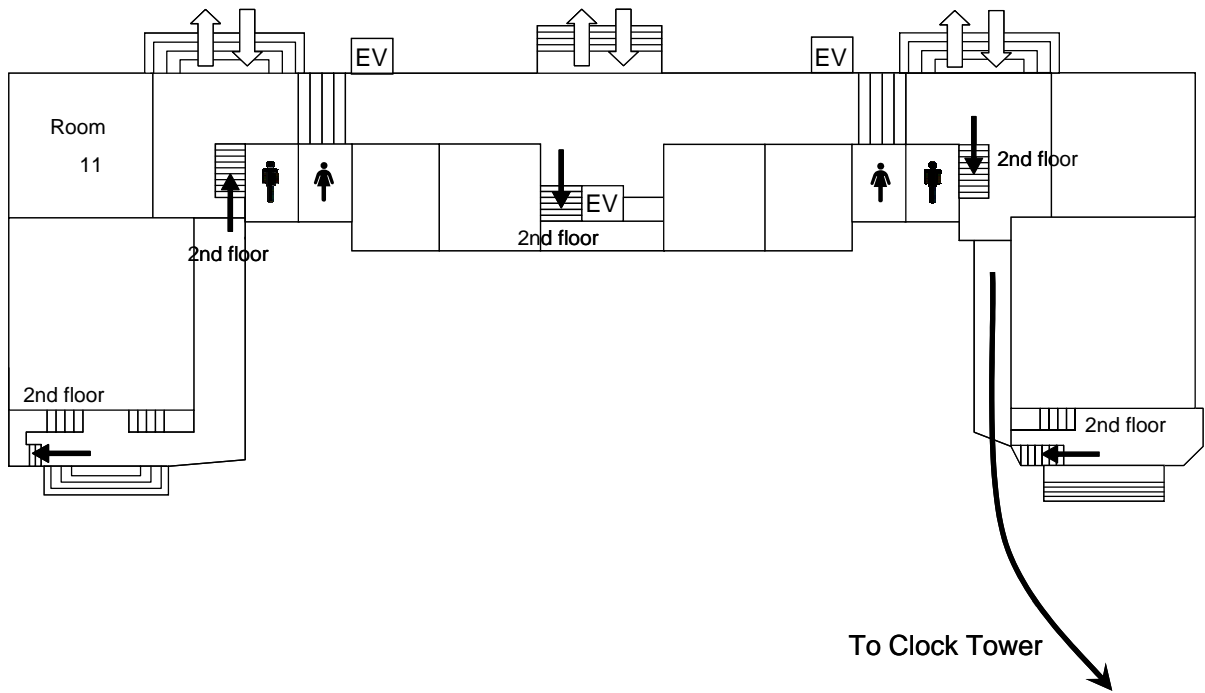




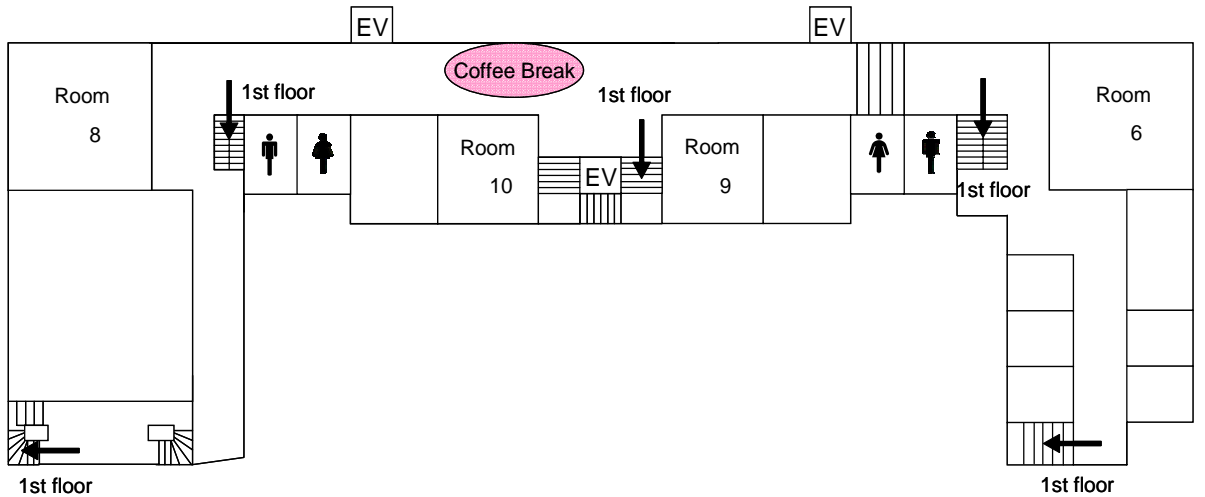
IATBR

The Expanding Sphere of Travel Behaviour Research

Faculty of Law and Economics
Main Bldg. 1st floor



Faculty of Law and Economics
Main Bldg. 2nd floor



Social Events

August 16 Reception and Bon fires

Place: Cafe-Restaurant " Camphora "

Location: In front of the Clock Tower

Time: 18:30~ Reception

19:30~ Bon fires

August 17 Food, drinks and music in Nishijin

Place: Orinasukan

Time: 19:00~

Free shuttle service is available!
Please meet at the entrance of the Clock Tower after the session.

August 18 Optional Tours

(See the next pages)

August 19 Conference dinner

Sponsored by the Kometani-Sasaki Fund

Place: Kyoto Hotel Okura

Time: 19:00~ Cocktail

20:00~ Dinner

Free shuttle service is available!
Please meet at the entrance of the Clock Tower after the session.



IATBR

Optional Tours

Day tours and half-day (afternoon) tours are available to IATBR delegates and accompanying persons. For details, please contact the optional tour desk **before 16:30 on Aug.16**. Tour descriptions are listed below.

Plan A: Day Tours

Day tours are available to visit Nara—the capital of Japan in the eighth century—and Osaka—the center of commerce through the 19th century—as well as Kyoto. You can choose from the following five optional tours.

Optional Tour A-1: Major Attractions and Shopping in Kyoto

A tour to visit UNESCO world-heritage sites including Kinkaku-ji Temple, Kiyomizu-dera Temple, and Nijo-jo Castle. A walking tour of shopping districts, including Sanjo-dori Street, Nishiki-koji market (called “the kitchen of Kyoto”) and arcaded Teramachi and Shin-kyogoku shopping streets. After visiting the places that embody Japanese history and culture, you will have an opportunity to admire and taste Kyo-Ryori (“Kyoto Cuisine”) in a traditional Japanese restaurant. Major departments are located nearby, and interested participants can take this opportunity for more shopping after the tour.

Optional Tour A-2: A Tour to the Secluded North-Western Part of Kyoto

A scenic drive through the Takao Parkway, visiting secluded Kodai-ji Temple and Jingo-ji Temple along Kiyotaki River. The area is famous for autumn maple tinges. After lunch, experience the old art of “Ko-do” (“ko” means incense and “do” means “the way”) like noble people did in ancient times, then shopping in the downtown area to see many aspects of Kyoto.

Optional Tour A-3: World-Heritage Sites in Ancient Nara

Visiting Nara, the ancient capital of Japan till the end of the eighth century, and select world-heritage temples it offers, including: the “Daibutsu-den” (“Hall of the Great Buddha”) of Todai-ji Temple, the largest wooden building in the world, and Horyu-ji Temple, founded in 607 by Prince Shotoku, considered by many the patron saint of Japanese Buddhism. The tour includes a stroll through tranquil old town to soak up the old Japanese way of living.

Optional Tour A-4: Enryaku-ji Temple and Lake Biwa Cruise

Cruise the Lake Biwa, the largest lake in Japan in Shiga Prefecture, then take a funicular railway to the top of Mt. Hiei to visit Enryaku-ji Temple. Enryaku-ji has dominated the Buddhism denominations in Japan for over 1,200 years since its founding, and is on the world-heritage list.

Optional Tour A-5: One-Day Osaka Tour

Soak up the atmosphere of the down-to-earth Osaka lifestyle in its Minami District, which encompasses huge and lively entertainment areas. Enjoy a riverboat cruise along the Dotonbori Canal which runs through the District, dine at one of the abundant eateries offering hearty cuisines (Osaka is known as the town of “Kuidaore” which loosely translate as “eat till drop”), and shop along shopping streets and enjoy flashy and peculiar people there.

Plan B: Hands on Japanese Culture Half-Day Tours

Each half-day tour comprises a visit of the Imperial Palace and a hands-on experience with one of Japanese arts and crafts. After the morning sessions, tour groups will meet at the Imperial Palace and visit major palace buildings, including Shishin-den Hall, Seiryō-den Hall and Kogoshō (“Pettit Palace”), which will display the transition of architectural styles since the Heian period. The tour, which involves a 1-km walk, will illuminate the court culture over 1,200 years. After the tour of the Palace, each tour group will take off for its own hands-on experience.

Optional Tour B-1: Kodo

Along with Sado (tea ceremony) and Kado (flower arrangement), Kodo is one of the three major “Geido” (or “ways of art”). Kodo has to do with the way of “listening” to (not “smelling”) the incense. You will learn to guess the type of incense while listening to traditional Japanese incenses according to the basic rules of Kodo.

Optional Tour B-2: Tea Ceremony

Learn basic tea ceremony etiquette in a traditional Japanese tea house. At the ceremony, sweets are first served before tea. The current form of tea ceremony was established in the 16th century by Sen-no-Rikyu who incorporated “wabi” and “sabi” into the formality of having tea with a company. The spirit of hospitality is the central concept of tea ceremony. Tea ceremony is still popular among the Japanese and broadly practiced.

Optional Tour B-3: Kado

Kado, flower arrangement, is the third of the three major Geido. The Japanese have enjoyed flower arrangement for over 700 years. It is an art form to arrange flowers, leaves and branches into a vase while balancing the space they create. Flower arrangement first had rigid styles and rules, but has expanded to involve new styles materials and forms. A visit to the tea garden and tea house that belong to the head family of a flower arrangement school will be included.

Optional Tour B-4: Dyeing

Visit a workshop of traditional Yuzen and “Rokestu” dyeing and experience the art of Japanese dyeing. Create your original handkerchiefs or T-shirt with natural dyes.

Optional Tour B-5: Origami

Origami has been a favorite Japanese pastime where three-dimensional flowers, butterflies turtles and other animals and plants are created by folding a square piece of paper. In the Edo Period, a method was invented to produce multiple cranes out of a sheet of paper. You can learn to make two to several cranes using a sheet of colorful Yuzen Japanese paper.

Plan C: Half-Day Tours

Like Plan B, the tours start after the morning sessions. Each tour includes a visit to the Imperial Palace, then a place of prime interest in Kyoto. The following four tours are available.

Optional Tour C-1: Nijo-jo Castle

Built in 1603 as the official residence of the first Tokugawa Shogun, Ieyasu, and it was the stage of the transfer of power from Tokugawa Shogunate to Emperor at the beginning of the Meiji Era. The Ninomaru Palace boasts 33 rooms with 800 tatami mats, each room fitted with spectacular screen paintings. On the world-heritage list.

Optional Tour C-2: Kinkaku-ji Temple (Rokuon-ji)

The original building was constructed in 1397 as a retirement villa for Shogun Ashikaga Yoshimistu. Covered with gold foil, the pavilion’s radiant figure reflects beautifully on the pond. The pavilion has three stories, the first story in Shinden style from the aristocratic Heian period, the second story in Buke style from the martial Kamakura period, and the third story in the zen-buddhism style. The temple has an expansive garden with Kinugasu Mountain as its “Shakkei” (backdrop).

Optional Tour C-3: Kiyomizu-dera Temple

Build in the eighth century toward the end of Nara Period. The main hall has a huge veranda (known as “Kiyomizu no Butai” or “the stage of Kiyomizu”) which is supported by 139 pillars, that were put together without using a nail, and juts out over the hillside. It offers a breathtaking view of the city of Kyoto. The stone-paved approach to the temple, “San-nen Zaka” (or “San-nei Zaka”) retains the atmosphere of old Kyoto.

Optional Tour C-4: Sanjusangen-do

The original temple was built in 1164 by warrior Taira-no-Kiyomori at the request of retired emperor Go-Shirakawa. Its name came from the 33 bays that exist between the pillows in the main hall. The long narrow hall—with 120 meters long it is the longest in Japan—houses one thousand and one statues of the “one-thousand-armed kannon.” The symmetric rows of statues by different authors from various periods make a stunning view.